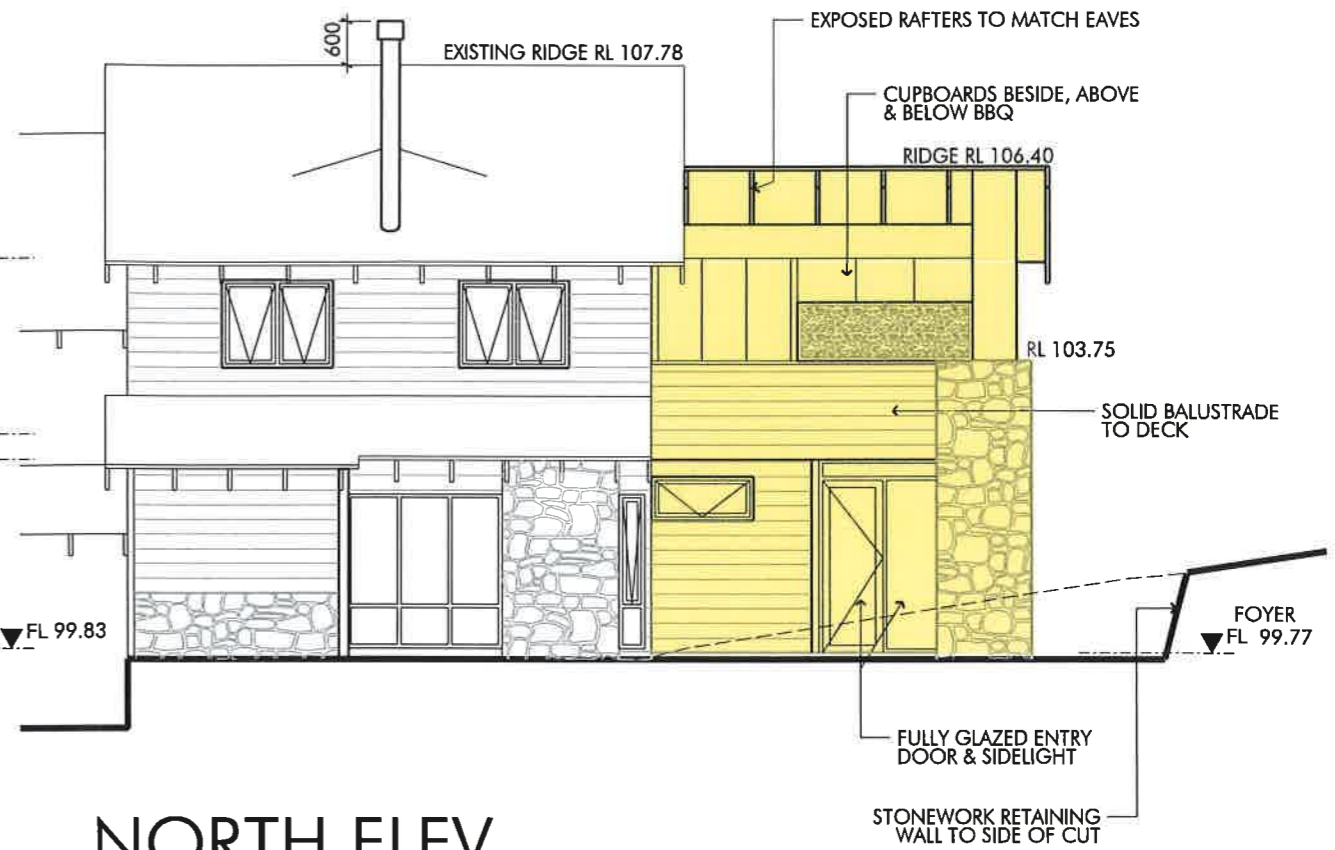
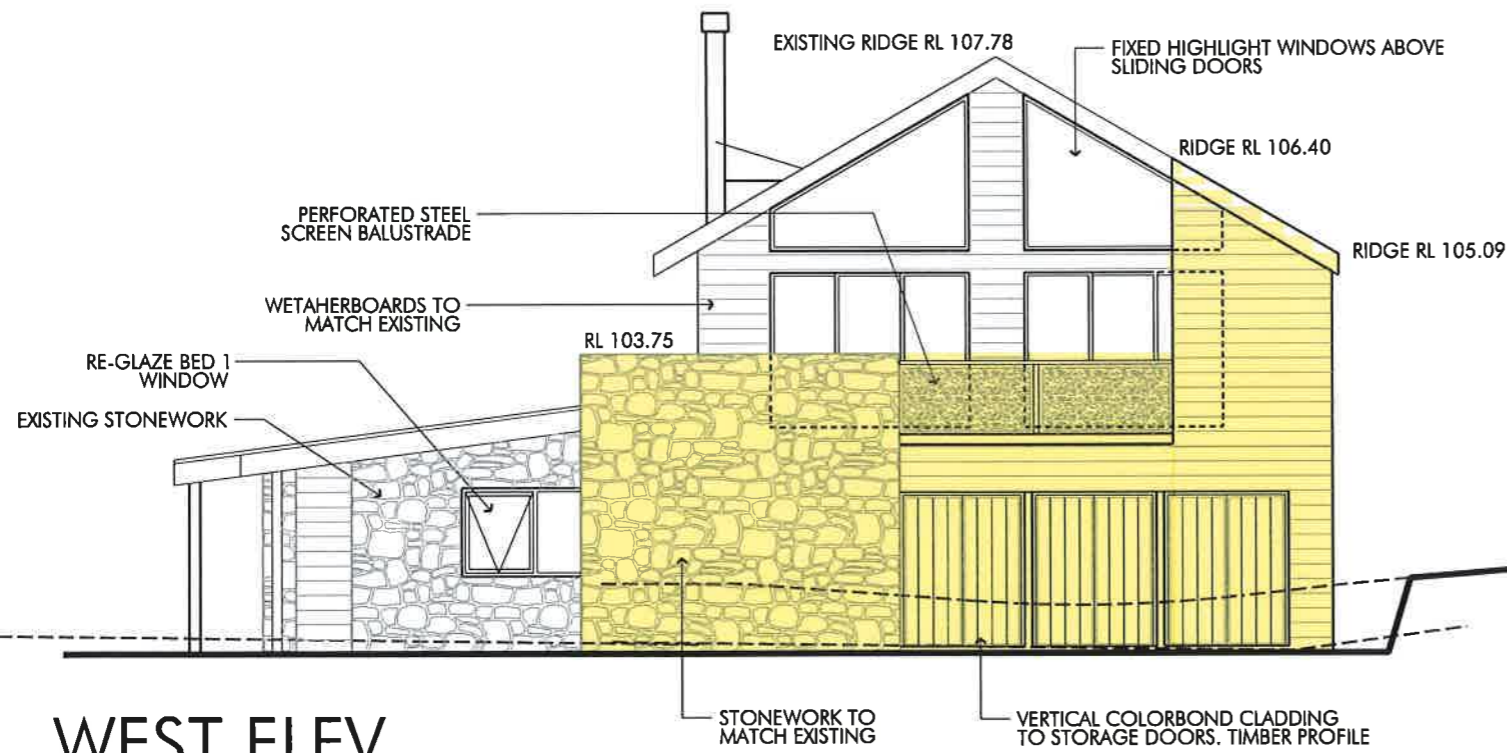


SOUTH ELEV

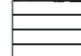





NORTH ELEV



WEST ELEV

EXTERNAL FINISHES SCHEDULE

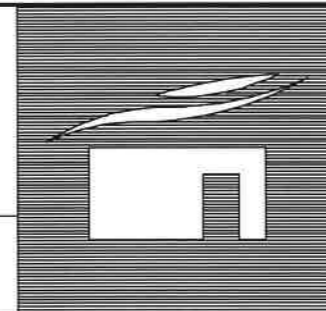
	WETAHERBOARDS TO MATCH EXISTING SEE BUSHFIRE NOTES re: SPECIES
	STONEWARK TO MATCH EXISTING
	PERFORATED STEEL SCREEN BALUSTRADE
	VERTICAL COLORBOND CLADDING (TIMBER PROFILE)

NSW GOVERNMENT
Planning & Infrastructure

26 NOV 2014

DEVELOPMENT ASSESSMENT AND
SYSTEMS PERFORMANCE
RECEIVED - JINDABYNE

Proposed Alterations & Deck Extension,
Feathers Lodge Lot 603 DP 1118588
Mountain Dr, Woodridge, Thredbo
For A Hosie & N Murray



**DAVID
LAW**
www.davidlaw.com.au



ezzy architects PTY LTD
ABN 51 001 856 999
Architects, Landscape Architects, Shadow Studies, Interior Design
Central Coast Office - 37 Bayview Ave, East Gosford, 2250
david@davidlaw.com.au Ph (02) 4323 3935. Fax (02) 4323 3932
www.ezzyarchitects.net.au

Datum	Drawn: DL	Development Application		
Scale 1:100 (A3)	30/9/14	Ref No.	Sheet	Issue
		HOSIE-MURRAY-DA	3	A